



Community Plan 2025-2030

Sylvia Ceacero, MBA, MA, MCRM
Chief Executive Officer

HOPE
has found a
HOME

Community Plan 2025-2030

VISION - Functional-Zero Homelessness by 2030: experiences of homelessness are Rare, Brief and Non-Recurring

GUIDING PRINCIPLES - Person-Centred, Housing is a Human Right, Nothing About Us Without Us, Choice, Health and Well-Being for All, Aligned with Current Strategies, Decolonizing Lens and Evidence Based and Data Driven, Bias towards Action in all Impact Areas

THREE IMPACT AREAS - Prevention, Data and Housing



Built for Zero Inspiration

- “Helping our community adopt proven practices, deploying existing resources more efficiently, and using real-time data, rapid cycle testing and human-centred design to improve performance;
- Engaging leadership from the government, private and philanthropic sectors in securing new resources for communities and removing policy roadblocks; and,
- Connecting communities to one another for innovation, knowledge capture and group problem solving.”

Taken from Built for Zero Canada (<https://bfzcanada.ca/getting-to-zero/>)



HOPE HAS FOUND A HOME

We agree that the Community Plan will be used to

- Develop a roadmap for systemic change
- Use as the guiding document to develop the strategic plans for our respective organizations
- Provide the framework for advocacy & communications
- Inform, involve and engage all people at all levels of our organizations
- Guide all prevention actions
- Help us focus on data and evidence for decision making
- Provide a blueprint for enhanced collaboration and reduced silos



Community Plan 2025-2030

For homelessness to be **rare, brief and non-recurring**, we must:

- continue to respond to immediate needs; shift focus, and dedicate more resources to **prevention**, upstream, midstream and downstream
- use **data** and evidence to guide our efforts and measure progress
- work towards the goal of **housing** for all people, using a human rights-based lens and a person-centric approach



Community Plan 2025-2030 – IMPACT AREAS

PREVENTION

DATA

HOUSING



Community Plan 2025-2030 – OUTCOME AREAS

Outcome 1: Poverty Reduction

Outcome 2: Person-Centred

Outcome 3: A Chosen and Safe Shelter for Everyone

Outcome 4: Funding for Housing

Outcome 5: Housing Stock and Type

Outcome 6: Housing Services and Supports



OUTCOME 1: POVERTY REDUCTION

Focus	Prevention	Data	Housing
Basic Universal Income: Guaranteed & Indexed	Prevents inflows into homelessness, Individuals do not return to homelessness	Community Data Dashboard (inflow/outflow metrics, Stats Canada income data, BC data catalogue, others)	Ability to afford appropriate, safe housing
All social assistance programs are overhauled	Meaningful increases to all types of social assistance rates and income supports prevent inflows/returns to homelessness	Research into social assistance programs	Ability to afford and maintain appropriate, safe housing
	Ensuring that coordination of all types of social assistance rates and income supports exist	Tracking coordination across the system	Ability to afford and maintain appropriate, safe housing
	Prevents inflows/returns to homelessness		
Rent Supplements are adequate, sufficient, timely, adaptive	Prevents inflows/returns into homelessness	Tracking across the system Measuring & monitoring efficacy across all rent supplement programs	Rent supplements work for all types of housing; supplements stay with the individual, not the type of housing
Health accessibility and interventions are adequate, sufficient, timely, adaptive	Guarantees for physical, psychological, and emotional needs prevent inflows/returns to homelessness	Health-related data collection	Provides stability and continuity to thrive and remain homed
Initiatives to support personal purpose and growth	Meaningful endeavors such as accessible employment if desired, provide purpose and contribute to health and wellbeing	Qualitative information and storytelling	Provides stability and continuity to thrive and remain homed
	Training and education as desired	Quantitative labour market data Cataloguing of programs	Potential for affording appropriate, safe housing



OUTCOME 2: PERSON-CENTRED

Focus	Prevention	Data	Housing
All government and community supports and services are coordinated	<p>Advocacy for coordination: where any door is the right door</p> <p>Collaborative model of response: convening the community for collaboration, measure progress and respond to gaps, as identified</p>	<p>Systems inventory</p> <p>Systems mapping (includes intersections with housing, health, and other supports/services)</p> <p>Systems monitoring</p>	<p>Purpose-built, human-centred design</p> <ul style="list-style-type: none"> • Adequate • Adaptive • Choice • Appropriate • Safe
<p>Professional development for workers in the sector and sector-adjacent organizations</p> <p>Development opportunities for peers for peer support and other work</p>	<p>Develop workers / peers to facilitate actions to divert people from homelessness or prevent returns to homelessness</p> <p>Enhance peer support programs/activities</p>	<p>Catalog of professional opportunities, including cultural competency training</p>	<p>Embed peer supports in housing sites to ensure successful tenancies and/or transitions to permanent housing</p>
Appropriate, adaptive programs, supports, services, and housing for everyone	<p>Account for diverse needs / tailor efforts</p> <p>Robust tailored transition plans</p> <p>Client-informed/Trauma-informed</p> <p>Provide choice (housing, treatment, supports)</p>	<p>Community Data Dashboard</p> <p>By-Name List</p> <p>CA Process</p>	<p>Purpose-built, human-centred design</p> <ul style="list-style-type: none"> • Adequate • Adaptive • Choice • Appropriate • Safe



OUTCOME 3: A CHOSEN AND SAFE SHELTER FOR EVERYONE

Focus	Prevention	Data	Housing
Sheltering rough: self-led and sanctioned encampment	Safety Choice Appropriate supports/services Robust tailored transition plans	Community Data Dashboard By-Name List Information on sheltering site closures	Purpose-built, human-centred design <ul style="list-style-type: none"> • Adequate • Adaptive • Choice • Appropriate • Safe
Housing supply	Elimination of evictions Choice Offer a continuum of housing options	Talking circles data gathering Research into human-centred design principles and application Establishment and implementation of CA Process to leverage Homelessness Management Information System level data to inform needs	Purpose-built, human-centred design <ul style="list-style-type: none"> • Adequate • Adaptive • Choice • Appropriate • Safe
Weather-related sheltering	Coordinated, effective, appropriately funded Emergency Weather Response and other initiatives	Emergency Weather Response data to show trends in need and projections	Permanent Continuous
Coordinated outreach efforts	Peer-led initiatives, funded and supported through not-for-profit	Systems inventory Systems mapping (includes intersections with housing, health, and other supports/services)	Purpose-built, human-centred design Culturally appropriate Trauma-informed Safe Choice



OUTCOME 4: FUNDING FOR HOUSING

Focus	Prevention	Data	Housing
Adequate operating resources	<p>Building operations are appropriately funded to ensure long term viability and sustainability</p> <p>Staff levels are appropriate to support people, including keeping people housed</p>	Information on housing affordability	Housing provided is adequate, safe, appropriate, adaptive
Funding for maintenance, repairs, and upgrades	<p>Building maintenance is a priority as a form of homelessness prevention</p> <p>Buildings are funding appropriately to preserve stock, viability and sustainability</p>	Information on housing affordability	Housing provided is adequate, safe, appropriate, adaptive
Adequate capital investments to build / buy	Desired housing availability	<p>Information on housing affordability</p> <p>CA Process to identify gaps</p> <p>Homelessness management information system</p> <p>information system level data to inform housing needs</p>	<p>Housing stock meets or exceeds demands</p> <p>Housing provided is adequate, safe, appropriate, adaptive</p>



OUTCOME 5: HOUSING TYPE AND STOCK

Focus	Prevention	Data	Housing
Complex care	<p>Housing is provided as part of basic eligibility for supports/services</p> <ul style="list-style-type: none"> • Psychiatric and addictions medicine • Medication monitoring and administration • Outreach • Primary care physician/clinic • 24/7 	<p>Systems inventory</p> <p>Systems mapping: including intersections with housing, health, and other supports/services</p> <p>Systems monitoring</p>	<p>Increased investments</p> <p>Peer-informed/person-centred that is culturally appropriate for individuals served</p>
Transitional housing	<p>Provision of an intermediate step between emergency crisis shelters and permanent housing, providing a safe and secure environment</p>	<p>Community Data Dashboard</p>	<p>Increased investments</p> <p>Peer-informed/person-centred that is culturally appropriate for a population</p>
Transition housing: primarily for women fleeing violence	<p>Provision of safe, temporary, 24/7 appropriately staffed shelter</p>	<p>Community Data Dashboard</p>	<p>Increased investments</p> <p>Peer-informed/person-centred that is culturally appropriate for a population</p>

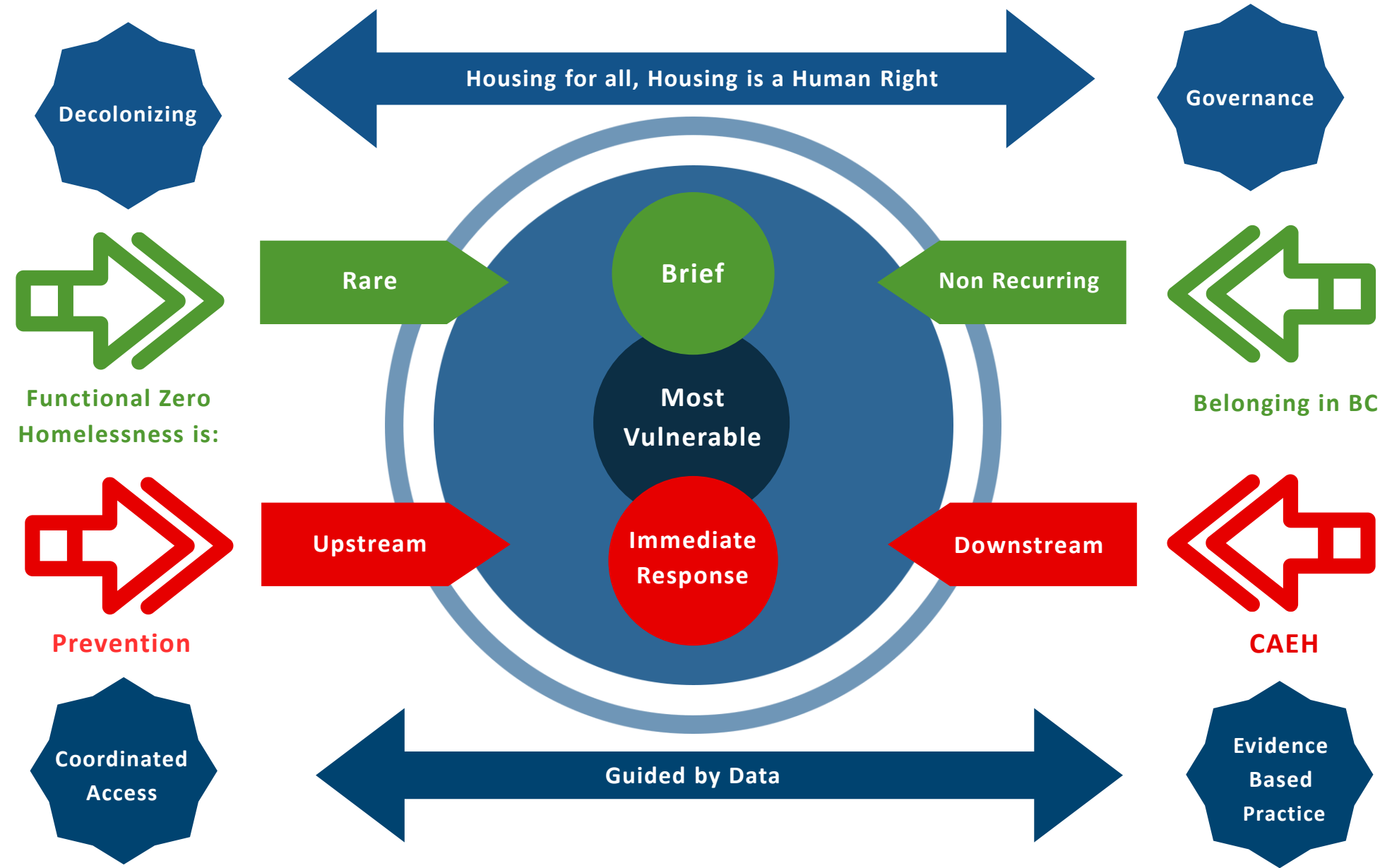


OUTCOME 6: HOUSING SERVICES AND SUPPORTS

Focus	Prevention	Data	Housing
Preventing inflows into homelessness	<ul style="list-style-type: none"> • Youth • Seniors • Women/gender diverse • Indigenous • Families 	Measuring inflow, active, outflow Community Data Dashboard By-Name list	Purpose-built, human-centred design <ul style="list-style-type: none"> • Adequate • Adaptive • Choice • Appropriate • Safe
Preventing returns to homelessness	<ul style="list-style-type: none"> • Youth • Seniors • Women/gender diverse • Indigenous • Families 	Measuring inflow, active, outflow Community Data Dashboard By-Name list	Purpose-built, human-centred design <ul style="list-style-type: none"> • Adequate • Adaptive • Choice • Appropriate • Safe
Addressing chronicity	<ul style="list-style-type: none"> • Youth • Seniors • Women/gender diverse • Indigenous • Families 	Measuring inflow, active, outflow Community Data Dashboard By-Name list	Purpose-built, human-centred design <ul style="list-style-type: none"> • Adequate • Adaptive • Choice • Appropriate • Safe
Eviction prevention	<ul style="list-style-type: none"> • Youth • Seniors • Women/gender diverse • Indigenous • Families 	Measuring inflow, active, outflow Community Data Dashboard By-Name list	Housing stability initiatives and actions Inclusion coordination: Talking Circles
Coordination of outreach across sectors --- MCFD, Corrections, hospitals...	Activities and coordination that result in no discharge back into homelessness	Systems inventory Systems mapping (includes intersections with housing, health, and other supports/services) Systems monitoring	Peer-informed/person-centred that is culturally appropriate for a population



Community Plan: ALIGNMENT WITH FUNCTIONAL-ZERO



Community Plan 2025-2030

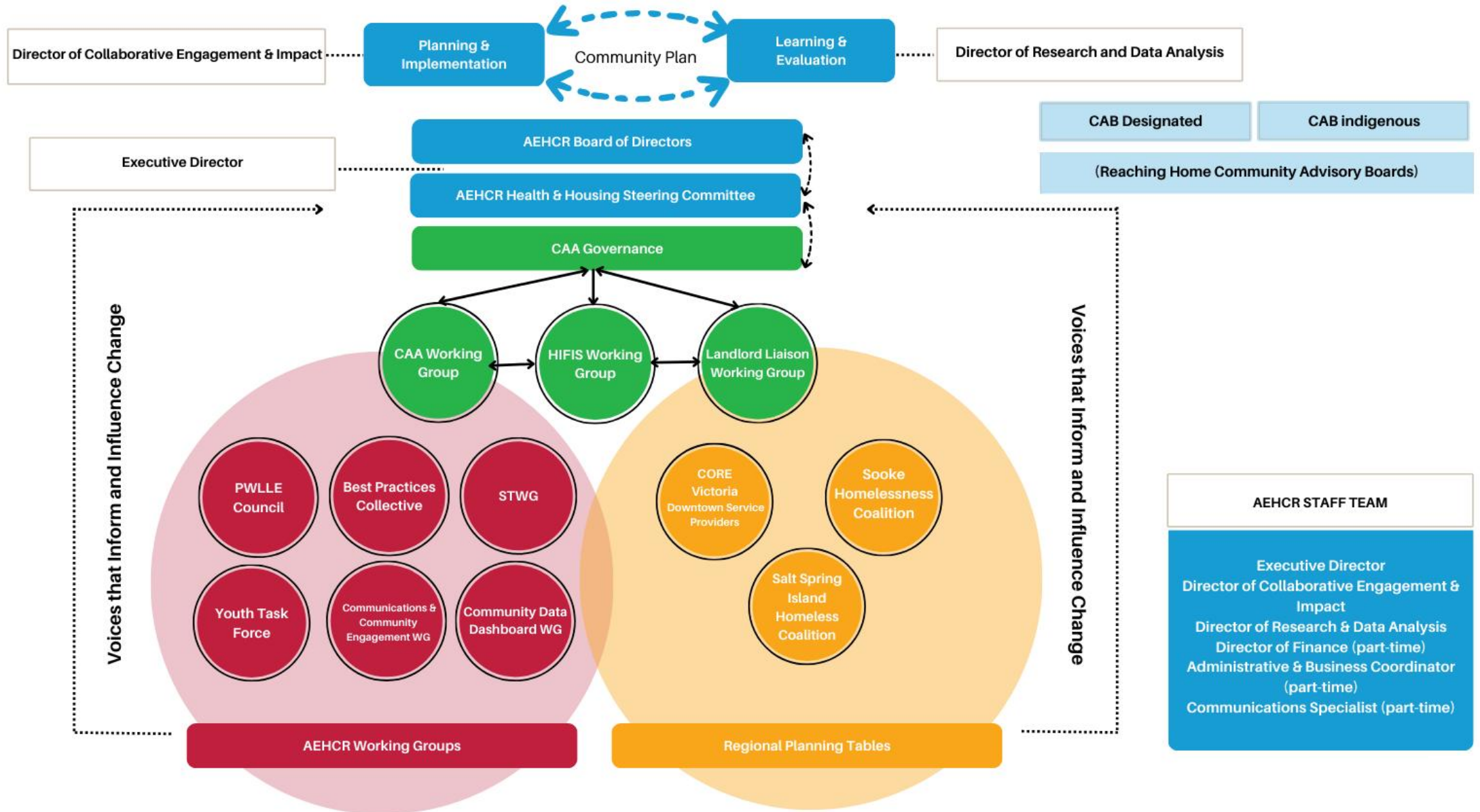
For homelessness to be **rare, brief and non-recurring**, we must:

- continue to respond to immediate needs; shift focus, and dedicate more resources to **prevention**, upstream, midstream and downstream
- use **data** and evidence to guide our efforts and measure progress
- work towards the goal of **housing** for all people, using a human rights-based lens and a person-centric approach



Homelessness Response System Transformation: Current

Collective Impact: Shared Accountability Framework



Core Functions

01

Regional Planning and Coordination

Objective: Ensure plans and initiatives developed and implemented by the Alliance have a region-wide focus and that housing and services are well coordinated and integrated.



02

Ongoing Research

Objective: Conduct research in support of evidence-based strategies and policies to end homelessness, including effective practices used in other jurisdictions.



03

System Monitoring

Objective: Develop and implement a monitoring framework to ensure efforts to address homelessness are effective and are providing necessary outcomes for the region.



04

Communications and Engagement

Objective: Implement community engagement and awareness strategies to ensure the underlying contributing factors of homelessness, the extent of homelessness in the region and solutions to ending homelessness are better understood by interested and affected parties (partners) and the general public.



05

General Administration

Objective: Perform administrative functions required to support the Board and Committee activities, including overall day-to-day operations, annual business planning, and reviews of the long-term Community Plan and strategic plan as needed.



Core Functions of the Alliance

- Convene
- Collaborate
- Advocate
- Communicate / Inform / Educate
- Research/data



Changes in the Alliance to Support of the Community Plan

- Homelessness Response System Transformation – review and implementation
- Governance – review and implementation
- Resourcing – review and implementation
- Organizational review – review and implementation
- Core Functions – Review and implementation





Thank you!